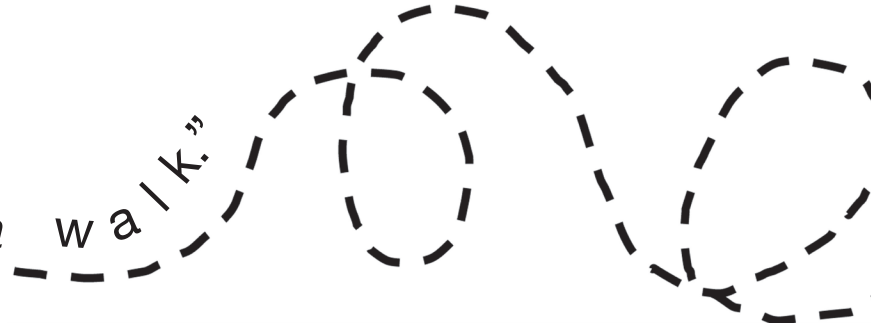




the element of LINE

The Swiss artist Paul Klee once said,


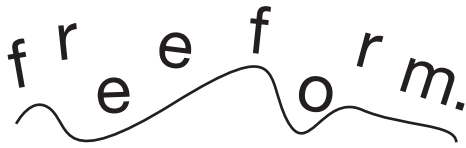
“A line is a  that went for a walk.”



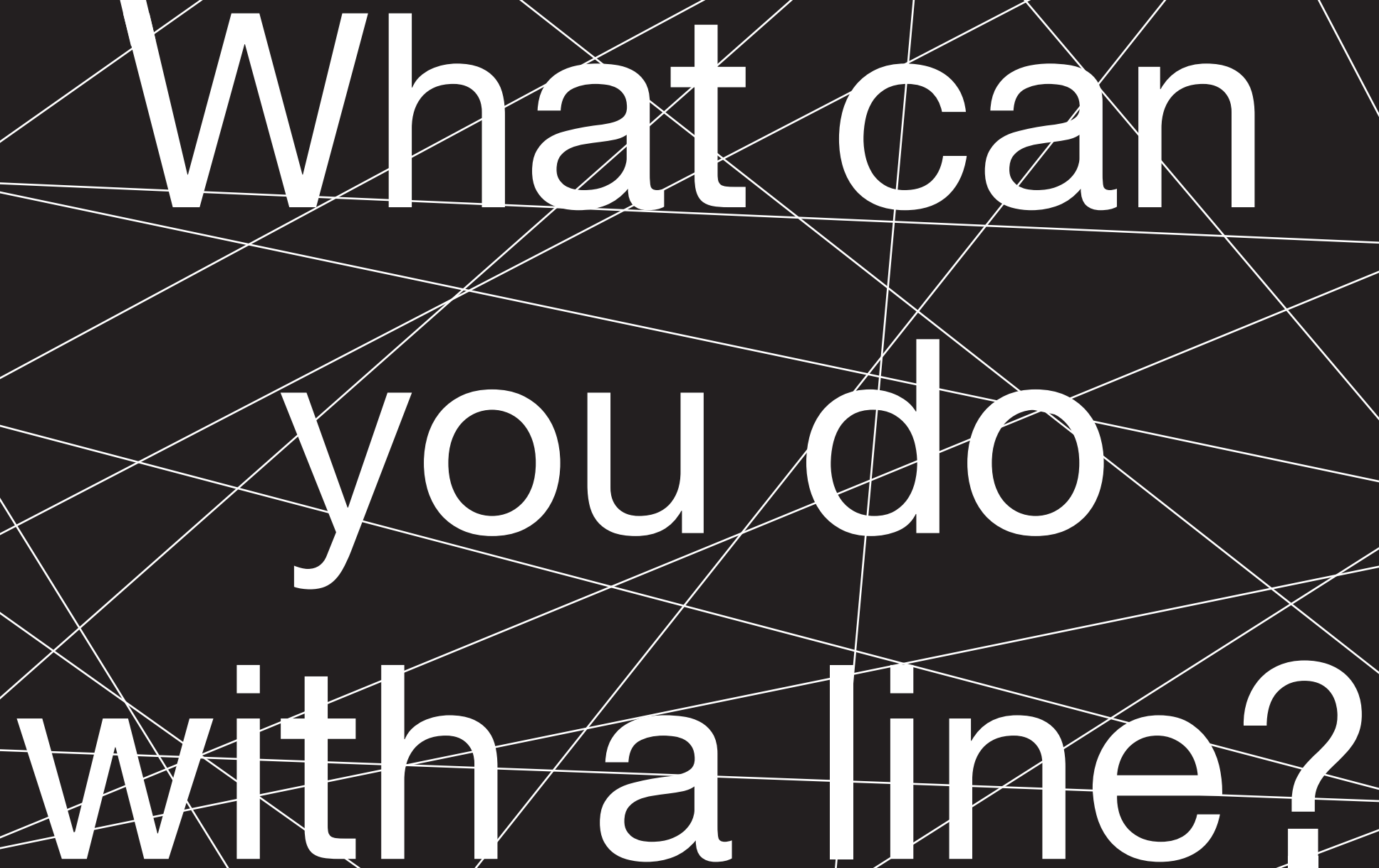
Indeed, a line is defined as *the path created by a moving point.*

Lines can be horizontal,  or .

thick or thin, light or **dark**,

straight,  or .

Sometimes, one line can be ALL of those things!



What can
you do
with a line?

line lab

cut & paste words along the lines to describe their movement.



<i>quick</i>	<i>stretch</i>	<i>fall</i>	<i>up</i>	<i>run</i>	<i>drop</i>	<i>bounce</i>
<i>down</i>	<i>smooth</i>	<i>glide</i>	<i>zig</i>	<i>zag</i>	<i>fast</i>	
<i>stop</i>	<i>bend</i>	<i>sharp</i>	<i>float</i>	<i>curve</i>	<i>forward</i>	
<i>reach</i>	<i>slither</i>	<i>start</i>	<i>slow</i>	<i>straight</i>		

CHALLENGE: use one line to fill this page.

How many different types of line can you use?
Look back at page 1 for ideas.

Every artist has a unique way of making lines. It's one way of expressing individual style.

Below are some examples of artists utilizing the element of line in their self portraits. What qualities do you notice in their lines?

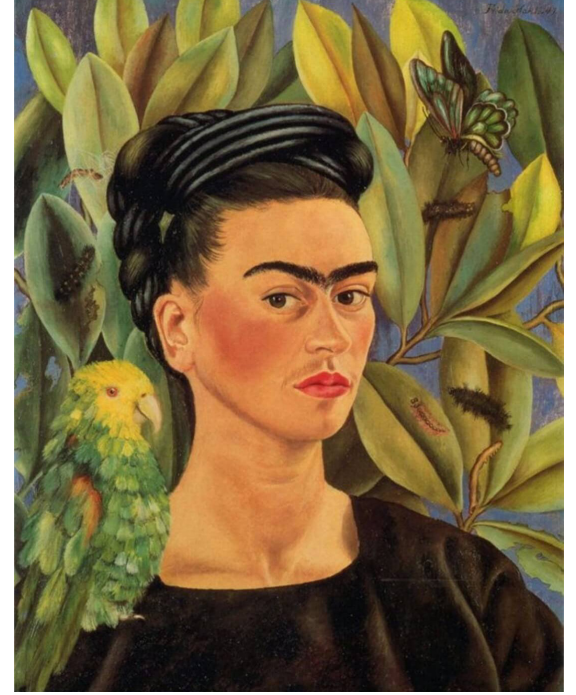
You might describe Van Gogh's as **bold and rough**, Hockney's as **soft and faint**, Kahlo's as **smooth and defined**.



Self Portrait, Vincent Van Gogh



Self Portrait, David Hockney



Self Portrait 1, Frida Kahlo

Do certain lines make you feel differently than others? Why might these artists have chosen to represent themselves in these ways?

If you were drawing a self-portrait, what kinds of lines would you choose to represent yourself? Using the space below, explore the use of line while drawing your own portrait.